

AVAILABLE
1ST QUARTER 2025

27349 AGOURA ROAD
LIBERTY CANYON TECH CENTER
CALABASAS, CA. 91302



LEE & ASSOCIATES
COMMERCIAL REAL ESTATE SERVICES

MIKE TINGUS
Principal
818.223.4380
mtingus@lee-re.com
DRE# 01013724

GRANT FULKERSON, SIOR
Principal
818.304.4956
gfulkerson@lee-re.com
DRE# 01483890

PROFESSIONALLY DEVELOPED,
OWNED AND MANAGED BY:

CYPRESS LAND CO.



HEAVY POWER:
3,000 AMPS



EXCEPTIONAL
CLEAR
HEIGHT: 24'



DOCK HIGH &
GROUND LEVEL
LOADING



+3/1,000 PARKING
266 STALLS



EXCEPTIONAL VISIBILITY
FROM 101 FREEWAY



NO GROSS
RECEIPTS TAX

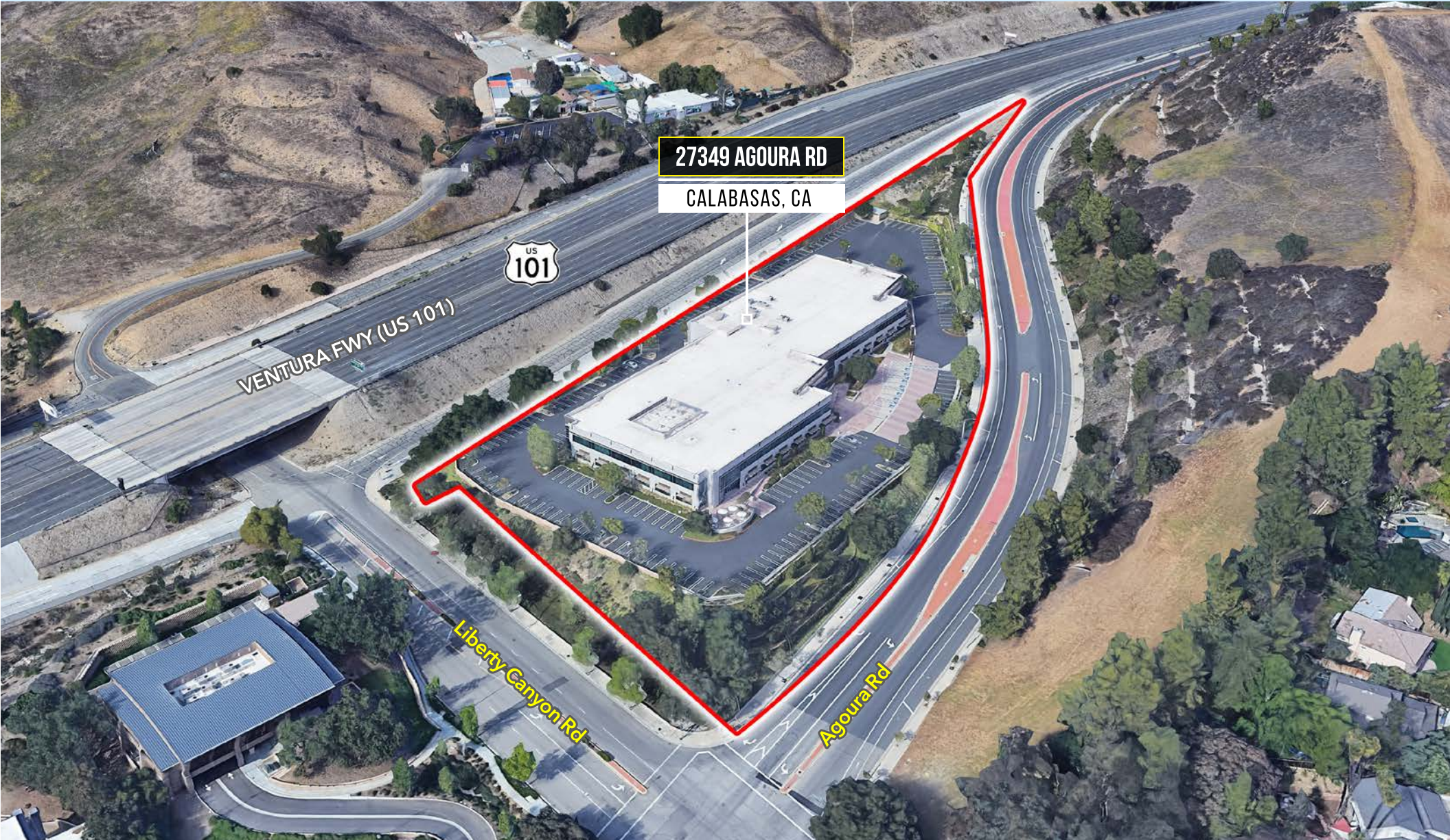


100%
HVAC



IDEAL CORPORATE
HQ FACILITY

83,838 SQUARE FEET | LEASE RATE: \$1.65 PSF NNN



27349 AGOURA RD

CALABASAS, CA

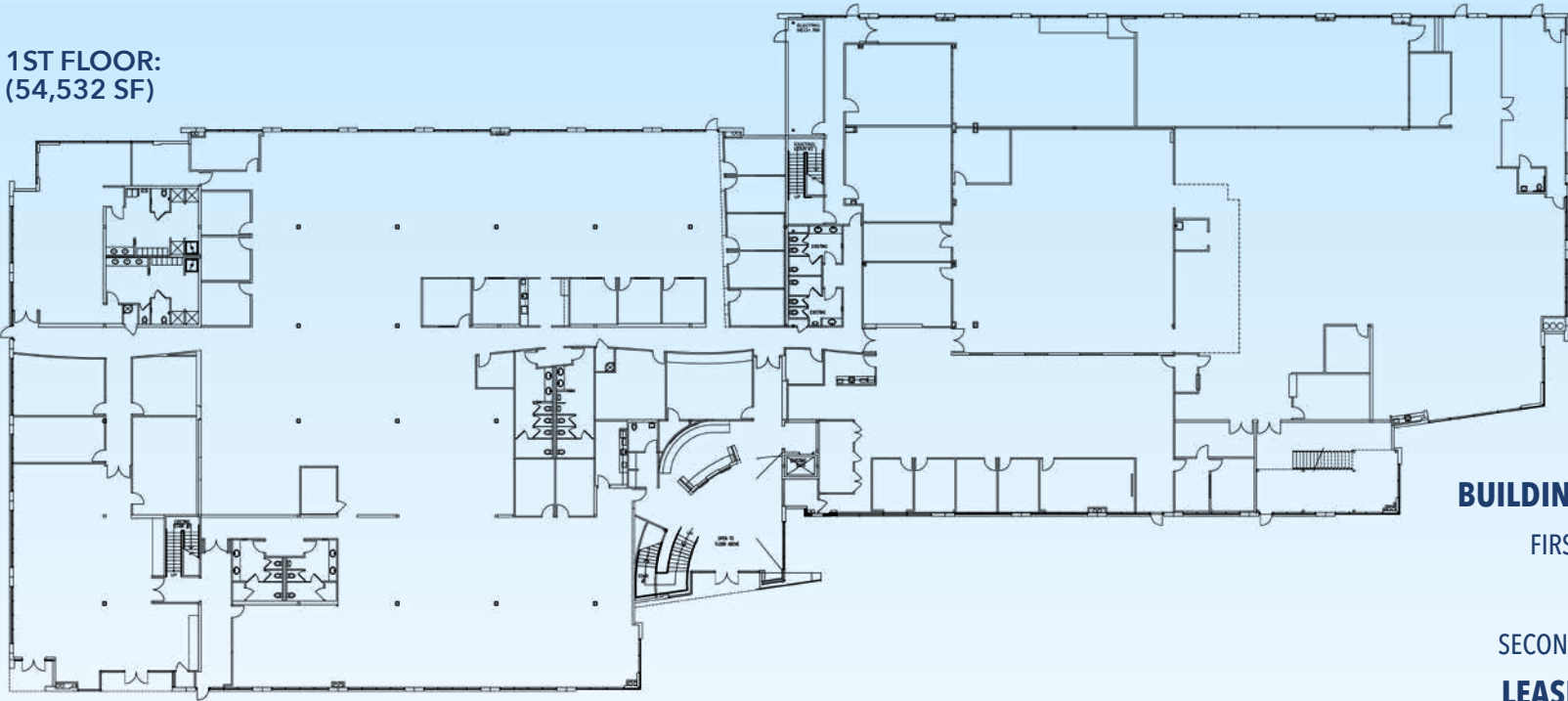


VENTURA FWY (US 101)

Liberty Canyon Rd

Agoura Rd

1ST FLOOR:
(54,532 SF)



BUILDING SIZE: 83,838 SF

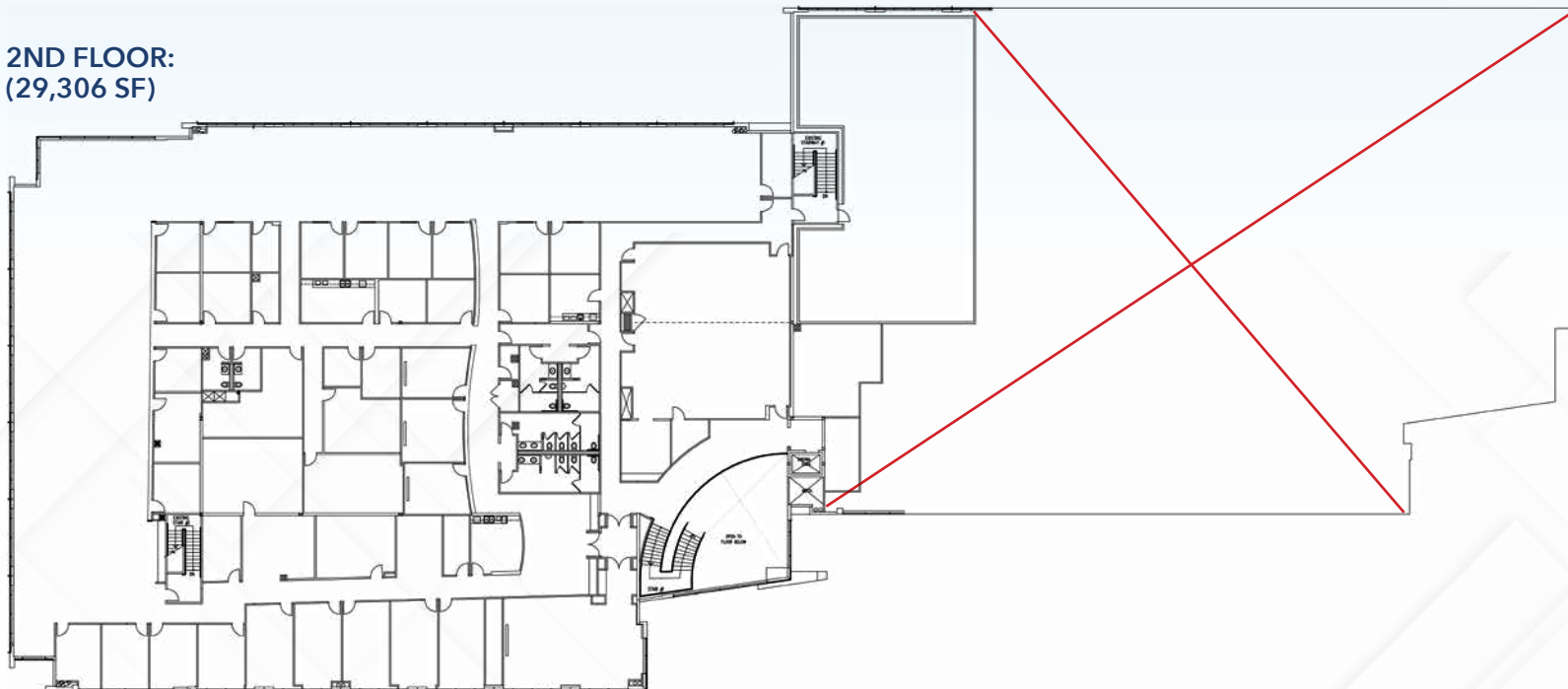
FIRST FLOOR: 29,912 SF (OFFICE)

25,320 SF (WAREHOUSE/R&D)

SECOND FLOOR: 29,306 SF

LEASE RATE: \$1.65 PSF NNN

2ND FLOOR:
(29,306 SF)





LEE & ASSOCIATES
COMMERCIAL REAL ESTATE SERVICES

Lee & Associates®
LA North/Ventura, Inc.
Corporate ID #01191898
A Member of the Lee & Associates
Group of Companies
5707 Corsa Avenue, Suite 200
Westlake Village, CA 91362
P 818.223.4388 F 818.591.1450
www.lee-associates.com

MIKE TINGUS

Principal
818.223.4380
mtingus@lee-re.com
DRE# 01013724

GRANT FULKERSON, SIOR

Principal
818.304.4956
gfulkerson@lee-re.com
DRE# 01483890



LEE & ASSOCIATES
COMMERCIAL REAL ESTATE SERVICES

Lee & Associates®
LA North/Ventura, Inc.
Corporate ID #01191898
A Member of the Lee & Associates
Group of Companies
5707 Corsa Avenue, Suite 200
Westlake Village, CA 91362
P 818.223.4388 F 818.591.1450
www.lee-associates.com

MIKE TINGUS

Principal
818.223.4380
mtingus@lee-re.com
DRE# 01013724

GRANT FULKERSON, SIOR

Principal
818.304.4956
gfulkerson@lee-re.com
DRE# 01483890



Lee & Associates®
 LA North/Ventura, Inc.
 Corporate ID #01191898
 A Member of the Lee & Associates
 Group of Companies
 5707 Corsa Avenue, Suite 200
 Westlake Village, CA 91362
 P 818.223.4388 F 818.591.1450
 www.lee-associates.com

MIKE TINGUS
 Principal
 818.223.4380
 mtingus@lee-re.com
 DRE# 01013724

GRANT FULKERSON, SIOR
 Principal
 818.304.4956
 gfulkerson@lee-re.com
 DRE# 01483890