



LEE & ASSOCIATES
COMMERCIAL REAL ESTATE SERVICES



NORTH RANCH COMMUNITY CENTER

1400 N. Westlake Blvd., Westlake Village, CA

GRANT FULKERSON, SIOR

Principal
818.304.4956
gfulkerson@lee-re.com
DRE# 01483890

MIKE TINGUS

Principal
818.223.4380
mtingus@lee-re.com
DRE# 01013724

PROPERTY DETAILS

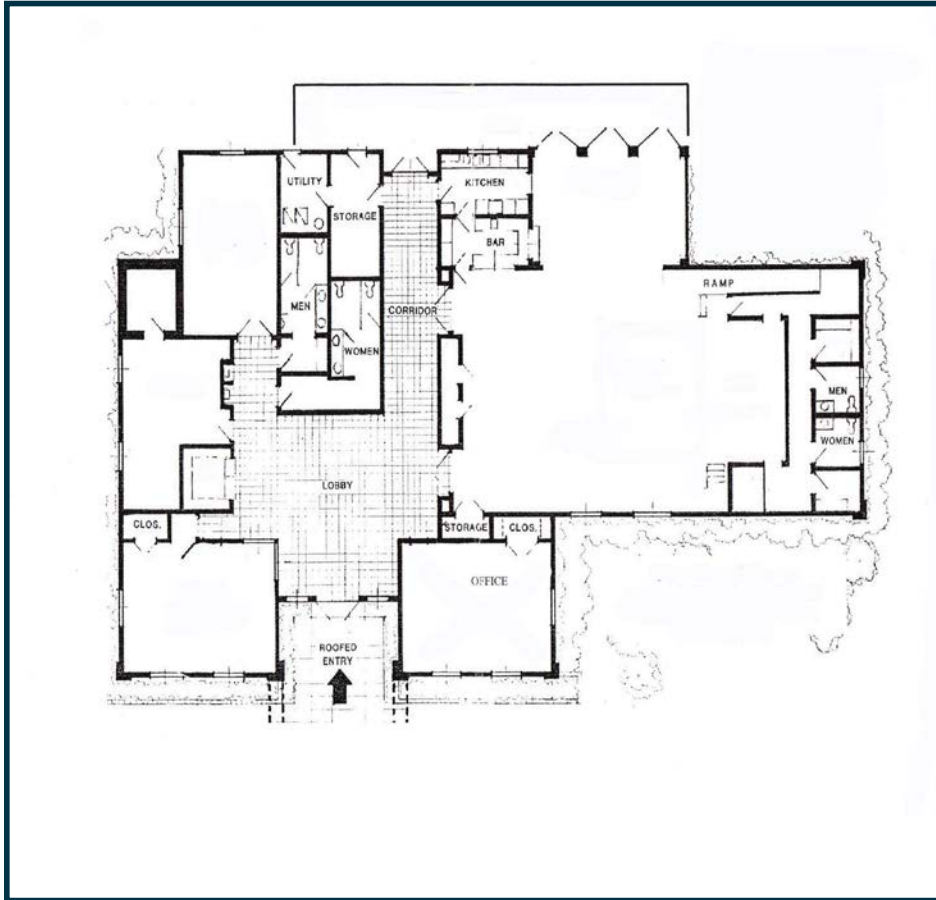
Property Size	6,427 SF
Parcel Size	1.5 Acres
Parking	51 Stalls
Lease Rate	\$2.65 PSF FSG

PROPERTY DESCRIPTION

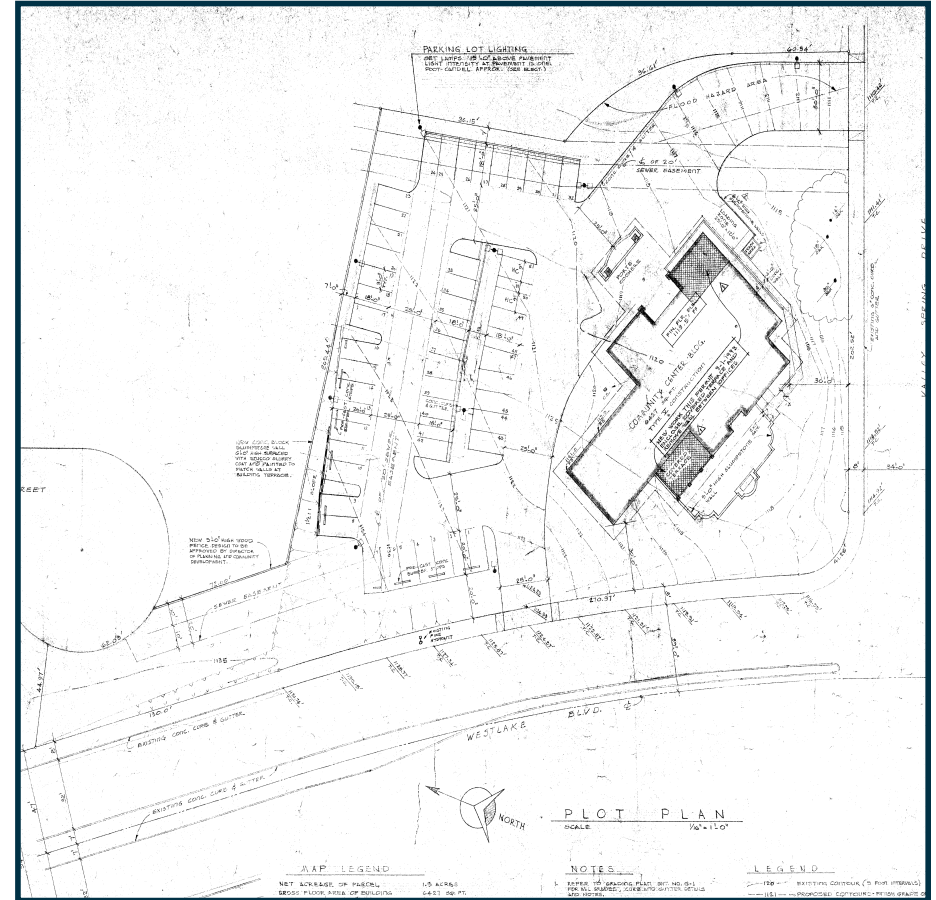
This unique leasing opportunity is strategically located in the prestigious North Ranch community in Westlake Village. This 6,427 square foot property is ideally situated on Westlake Blvd. with direct access to Highway 101, nearby numerous retail amenities and in close proximity to the North Ranch Country Club.



FLOOR PLANS



FLOOR PLAN



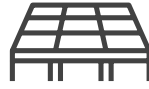
SITE PLAN



LOCATED IN
PRESTIGIOUS NORTH RANCH



KITCHEN/
BAR



STAGE/
DANCE FLOOR



ABUNDANT
PARKING



OUTDOOR
PATIO



SUBJECT
1400 N Westlake Blvd
Westlake Village, CA



Valley Spring Dr

N Westlake Blvd

24 FITNESS **MOUTHFUL** **The Crown & Anchor**
BAD CASS **1899 BAKE** **NORI JAPANESE GRILL** **Exotic Thai** **SHERWIN WINSTONS**
O'Reilly **Enterprise** **BR** **TABU SHABU** **ALL FIRED UP** **DAMORE'S**
LONGEVITY COFFEE **Golden Dragon CHINESE RESTAURANT** **FedEx**

SUBJECT
1400 N Westlake Blvd
Westlake Village, CA

BevMo! **Ralphs** **Orangetheory FITNESS** **Yogurtland**
STARBUCKS COFFEE **PATRÓN** **STONE ISLE** **Mechanics Bank** **at&t** **DIV**
Sharky's **PREMIER AMERICA** **FIREHOUSE SUBS** **Chick-fil-A** **Jason Micks**
verizon **Habit BURGER GRILL** **WELLS FARGO** **McDonald's** **CHASE**
BR **CORNER bakery CAFE** **Monocle Bank & Trust** **DECKER KITCHEN** **The Melting Pot** **KFC**

BARNES & NOBLE BOOKSELLERS **Cinépolis** **WORLD MARKET** **SEPHORA** **See's CANDIES**
lululemon **RESTORATION HARDWARE** **SOCIAL MONK** **farfalla** **roche bobois**
Paul Martin's **Fresh Scones** **BRANDY MELVILLE** **Hamadee CAFE** **Spiralizer**
SHAKE SHACK **Planet Beauty** **amazon fresh** **sweetgreen**

THOUSAND OAKS CIVIC ARTS PLAZA **LASSENS**
MASTRO'S STEAKHOUSE **Zen Day Spa** **TAIYO TAIYO RAMEN**
FOGO DE CHÃO BRAZILIAN STEAKHOUSE **Kalologie** **BANGKOK AVENUE**
PEPBOYS AUTO **SUNLIFE**

BOSTON PRIVATE BANK & TRUST COMPANY **CITY NATIONAL BANK**
STARBUCKS COFFEE **WASHI PLANET** **Nenna**

VONS **GELSON'S** **CVS pharmacy** **PEARL DISTRICT** **ATHLETA** **SPROUTS** **Tuscany** **ToMoDaChi** **YOZEN FROGURT** **Natural Cafe** **Papeyes**
Logix **Rooster** **Juice RANCH** **SUBWAY** **CHASE**
STARBUCKS COFFEE **First Citizens Bank** **Jamba Juice** **EAST COAST BAGEL CO** **WELLS FARGO**
BANK OF AMERICA **MENDOCINO FARMS sandwich market** **M. FREDRIC** **SEA CASA** **JOI** **FINNEY'S** **CLUB PILATES**

HYATT **HARVEST**
Comerica Bank

mediterraneo
STONEHAUS
WESTLAKE VILLAGE INN & SPA

23

Thousand Oaks

US 101

VENTURA FWY (US 101)

Thousand Oaks Auto Mall

Westlake High School

Oaks Christian School

Westlake Golf Course

Westlake Village

E Hillcrest Dr

N Westlake Blvd

E Thousand Oaks Blvd

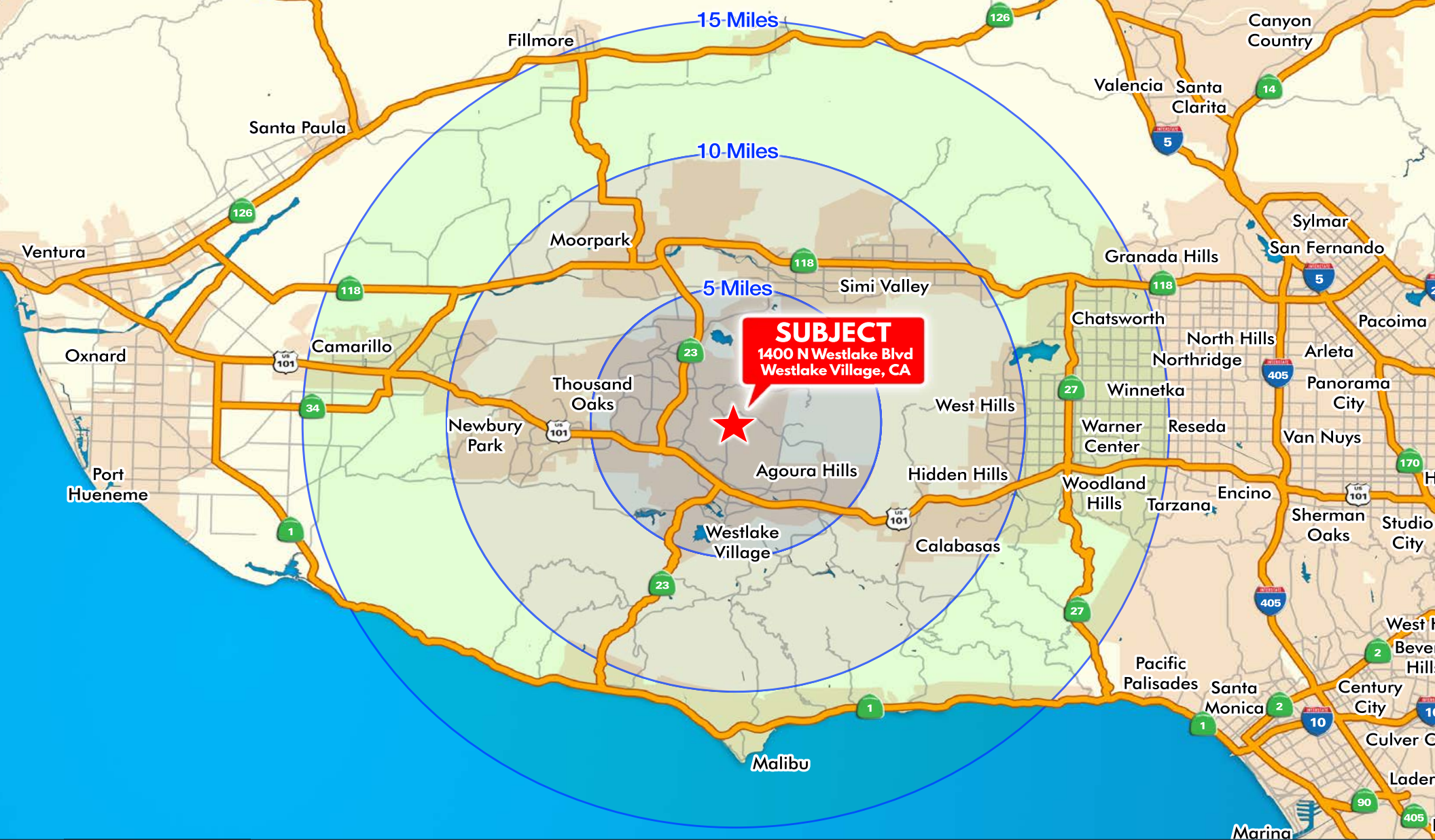
S Westlake Blvd

Townsgate Rd

Agoura Rd

Lakeview Canyon Rd

US 101



www.lee-re.com

GRANT FULKERSON, SIOR
 Principal
 818.304.4956
 gfulkerson@lee-re.com
 DRE# 01483890

MIKE TINGUS
 Principal
 818.223.4380
 mtingus@lee-re.com
 DRE# 01013724

No warranty or representation is made to the accuracy of the foregoing information. Terms of sale or lease and availability are subject to change or withdrawal without notice. CID #01191898