

**5301 MAUREEN LANE**  
Moorpark, California

**INDUSTRIAL  
FOR LEASE**



**GRANT FULKERSON, SIOR**

PRINCIPAL

818.304.4956

GFULKERSON@LEE-RE.COM

WWW.FULKERSON-RE.COM

DRE# 01483890

**MIKE TINGUS**

PRINCIPAL

818.223.4380

MTINGUS@LEE-RE.COM

WWW.MIKETINGUS.COM

DRE# 01013724

**BRYCE KOLB**

ASSOCIATE

818.497.3866

BKOLB@LEE-RE.COM

DRE# 02240862



COMMERCIAL REAL ESTATE SERVICES



## PROPERTY OVERVIEW

# PROPERTY INFORMATION

ADDRESS	5301 Maureen Lane, Moorpark, CA 93021
AVAILABLE SIZE	10,000 SF
OFFICE	600 SF
LAND	P.O.L.
CLEAR HEIGHT	18 Feet
POWER	200 AMPS 277-480v 3P4W
LOADING	Three (3) Dock, One (1) GL
PARKING	10 Stalls
LEASE RATE	\$1.15 PSF MG

\*Annual \$2,335 Expense in Addition to Base Rent

**10,000**  
SQUARE FEET

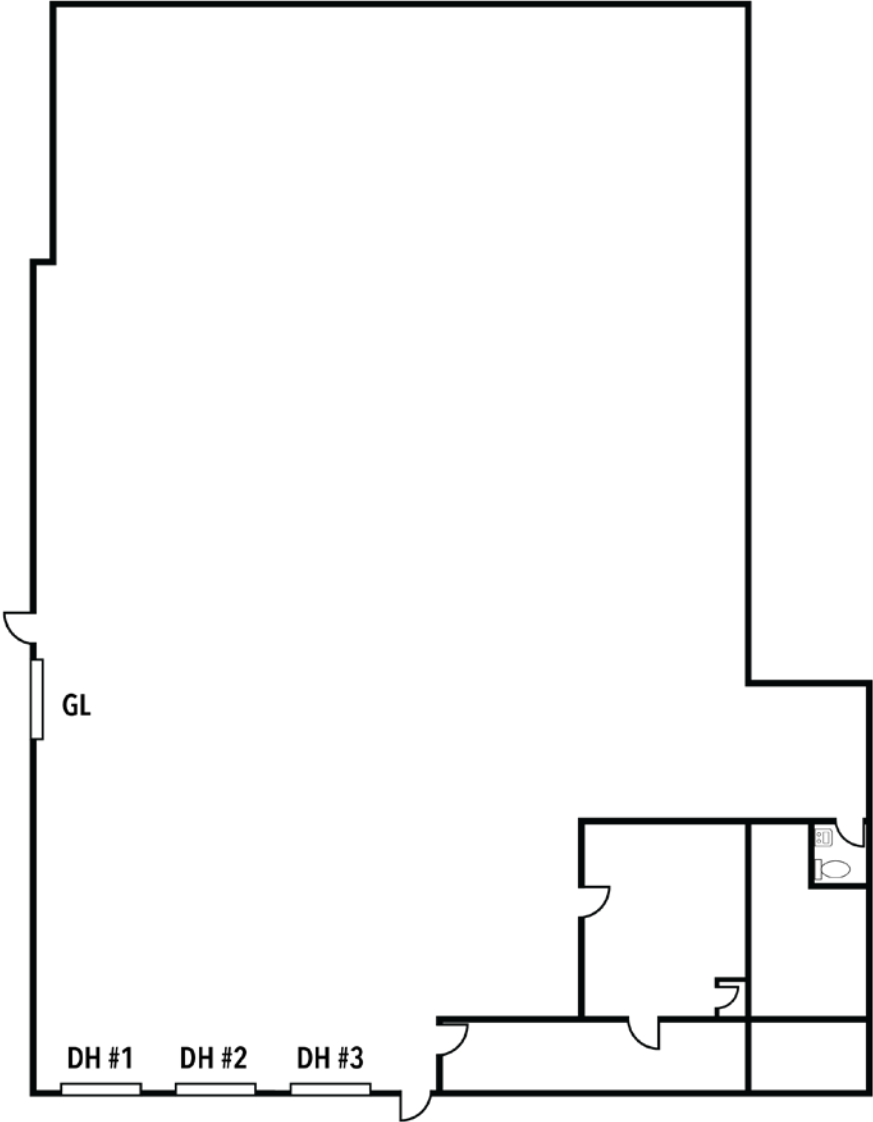
**18 FEET**  
CLEAR HEIGHT

**\$1.15 PSF**  
LEASE RATE

**THREE (3)**  
DOCK HIGH DOORS



FLOOR PLAN



**5301 MAUREEN LANE,  
MOORPARK, CA 93021**

**GRANT FULKERSON, SIOR**

PRINCIPAL  
818.304.4956  
GFULKERSON@LEE-RE.COM  
WWW.FULKERSON-RE.COM  
DRE# 01483890

**MIKE TINGUS**

PRINCIPAL  
818.223.4380  
MTINGUS@LEE-RE.COM  
WWW.MIKETINGUS.COM  
DRE# 01013724

**BRYCE KOLB**

ASSOCIATE  
818.497.3866  
BKOLB@LEE-RE.COM  
DRE# 02240862

