

5238 KAZUKO CT.
Moorpark, California

**INDUSTRIAL
FOR LEASE**

GRANT FULKERSON, SIOR

PRINCIPAL

818.304.4956

GFULKERSON@LEE-RE.COM

WWW.FULKERSON-RE.COM

DRE# 01483890

BRYCE KOLB

ASSOCIATE

818.497.3866

BKOLB@LEE-RE.COM

DRE# 02240862

 **LEE &
ASSOCIATES**

COMMERCIAL REAL ESTATE SERVICES

No warranty or representation is made to the accuracy of the foregoing information. Terms of sale or lease and availability are subject to change or withdrawal without notice.

PROPERTY OVERVIEW

PROPERTY INFORMATION

| | |
|---------------------|-------------------------------|
| ADDRESS | 5238 Kazuko Ct., Moorpark, CA |
| AVAILABLE SIZE | 5,961 SF |
| GROUND FLOOR OFFICE | 1,545 SF |
| MEZZANINE | 1,630 SF |
| CLEAR HEIGHT | 15 Feet |
| POWER | 200A / 277-480v / 3P / 4W |
| GL LOADING | ±14' x 12' |
| PARKING | 11 Stalls (2/1,000) |
| LEASE RATE | \$1.50 PSF Modified Gross |



5,961
SQUARE FEET

15 FEET
CLEAR HEIGHT

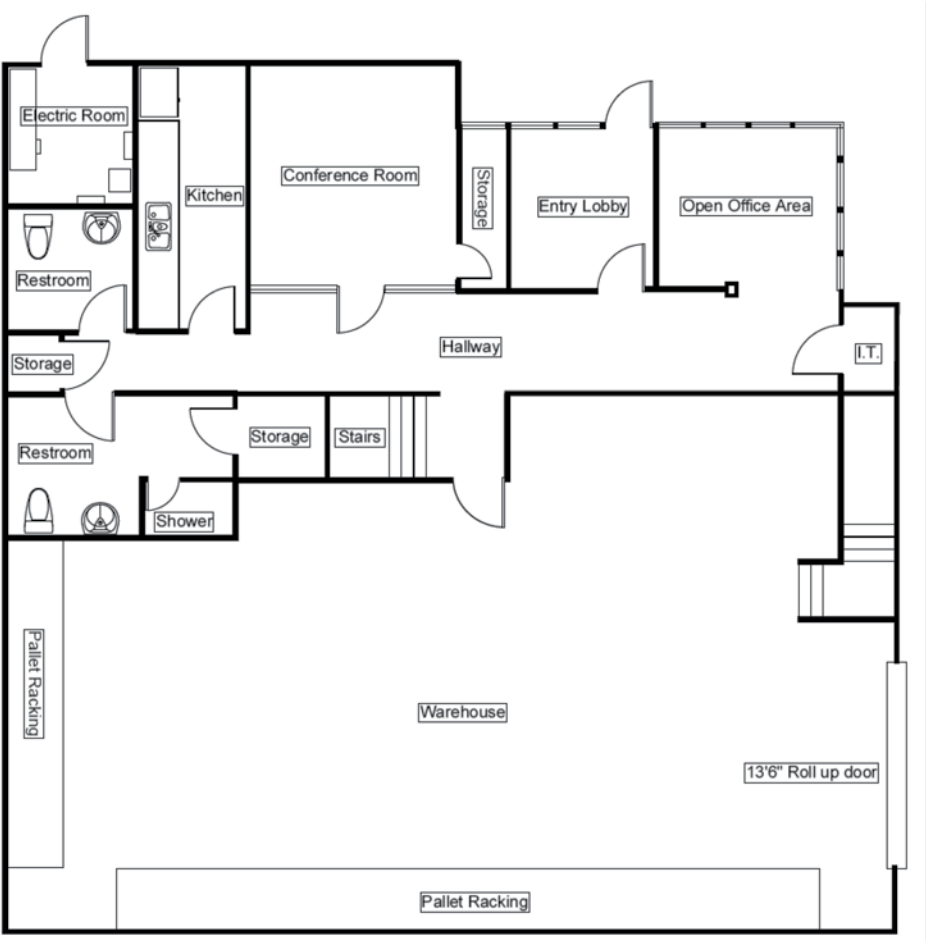
\$1.50 PSF
LEASE RATE

14' x 12'
GL LOADING DOOR

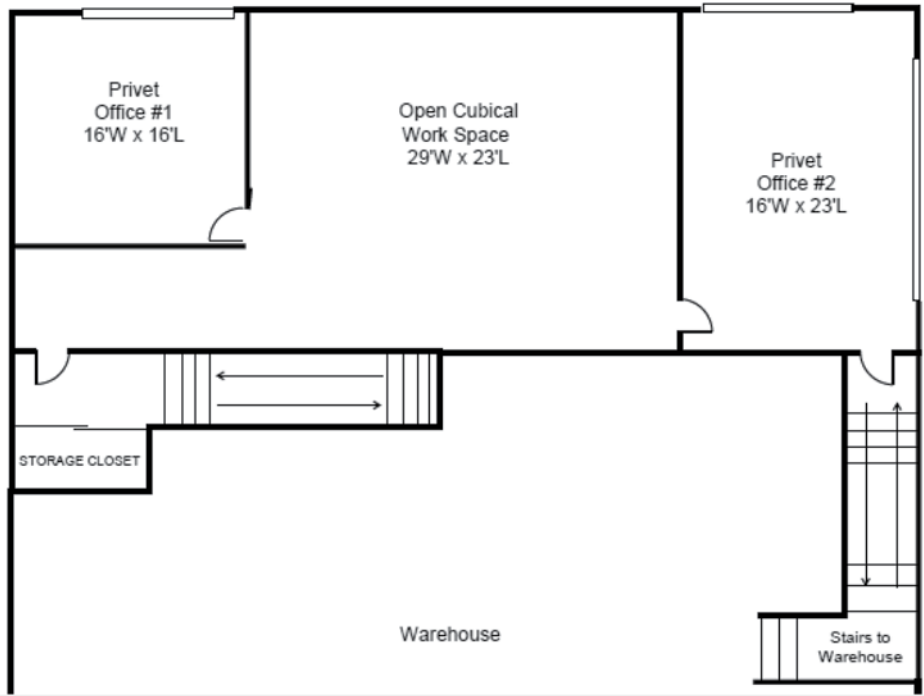


FLOOR PLAN

FIRST FLOOR



SECOND FLOOR



FLOOR PLANS ARE NOT TO SCALE OR REFLECT ALL, EXISTING, IMPROVEMENTS.





IMMACULATE OFFICE
IMPROVEMENTS



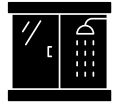
OVERSIZED
LOADING DOOR



SECURITY CAMERAS /
ALARMED



FURNITURE
AVAILABLE



EXECUTIVE RESTROOM
WITH SHOWER



Moorpark
Country Club

Rustic Canyon
Golf Course

Moorpark

118

23

Miller Pkwy



5238 Kazuko Ct
Moorpark, CA



Moorpark
High School

SOUTHERN CALIFORNIA
EDISON

AERIAL

5238 KAZUKO CT
MOORPARK, CALIFORNIA



PROPERTY PHOTOS



PROPERTY PHOTOS



**5238 KAZUKO CT.,
MOORPARK, CA**

GRANT FULKERSON, SIOR

PRINCIPAL

818.304.4956

GFULKERSON@LEE-RE.COM

WWW.FULKERSON-RE.COM

DRE# 01483890

BRYCE KOLB

ASSOCIATE

818.497.3866

BKOLB@LEE-RE.COM

DRE# 02240862

