

31238 VIA COLINAS
Westlake Village, CA

**CREATIVE OFFICE
FOR LEASE**



GRANT FULKERSON, SIOR
Principal
818.304.4956
gfulkerson@lee-re.com
DRE# 01483890

DREW STEWART
Associate
805.390.4455
dstewart@lee-re.com
DRE# 01859831

 **LEE &
ASSOCIATES**
COMMERCIAL REAL ESTATE SERVICES

No warranty or representation is made to the accuracy of the foregoing information. Terms of sale or lease and availability are subject to change or withdrawal without notice. CID #01191898

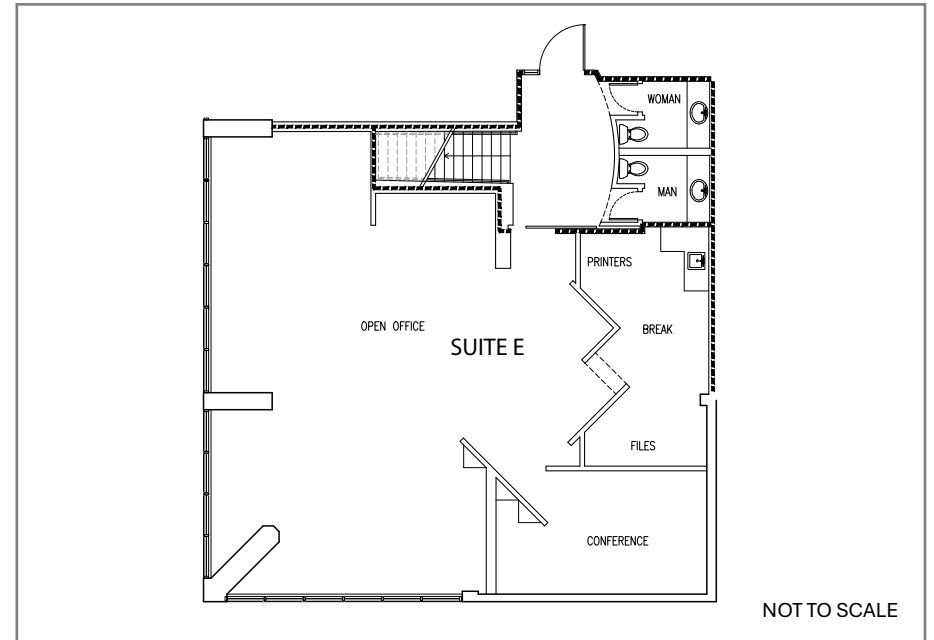
PROPERTY OVERVIEW

PROPERTY INFORMATION

ADDRESS	31238 Via Colinas Westlake Village, CA 91362
SUITE	E
SIZE	1,695 RSF
LEASE RATE	\$2.25 PSF
LEASE TYPE	Modified Gross + J
CAM	\$0.35 PSF
PARKING	4 Stalls

PROPERTY HIGHLIGHTS

- Prime Westlake Village Location
- Impressive, Creative Office, Improvements
- Gym On-Site
- Close Proximity to Numerous Retail Amenities



NEIGHBORING AMENITIES



31238 VIA COLINAS
WESTLAKE VILLAGE, CA 91362

GRANT FULKERSON, SIOR
Principal
818.304.4956
gfulkerson@lee-re.com
DRE# 01483890

DREW STEWART
Associate
805.390.4455
dstewart@lee-re.com
DRE# 01859831

