

21-29

W. EASY STREET

SIMI VALLEY, CALIFORNIA

VENTURA COUNTY

For Lease

INSTITUTIONALLY MANAGED | FLEXIBILITY TO GROW IN A PORTFOLIO | DELIVERING UNPRECEDENTED CUSTOMER SERVICE

FOR INFORMATION,
CONTACT:



LEE & ASSOCIATES
COMMERCIAL REAL ESTATE SERVICES
Corporate ID #01191898

GRANT FULKERSON, SIOR

Principal
818.304.4956
CA License #01483890

ERICA BALIN

Principal
818.444.4912
CA License #01481476

BRYCE KOLB

Associate
818.444.4931
CA License #02240862

Multi-Tenant Industrial Property

- High Image Professional Business Park
- Strategically Located Along Main Thoroughfare
- Gated Site Providing Additional Security
- Immediate Access to Highway 118 Via Madera Rd
- Near Numerous Retail Amenities
- Impressive Clearance Heights
- Zoned GI-SP

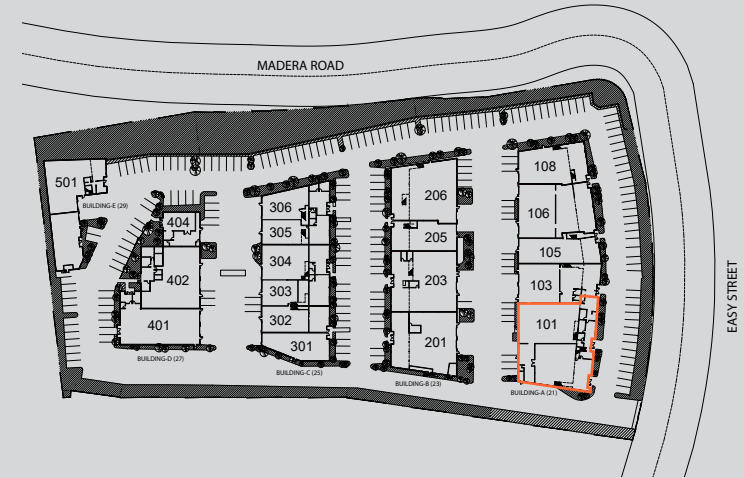
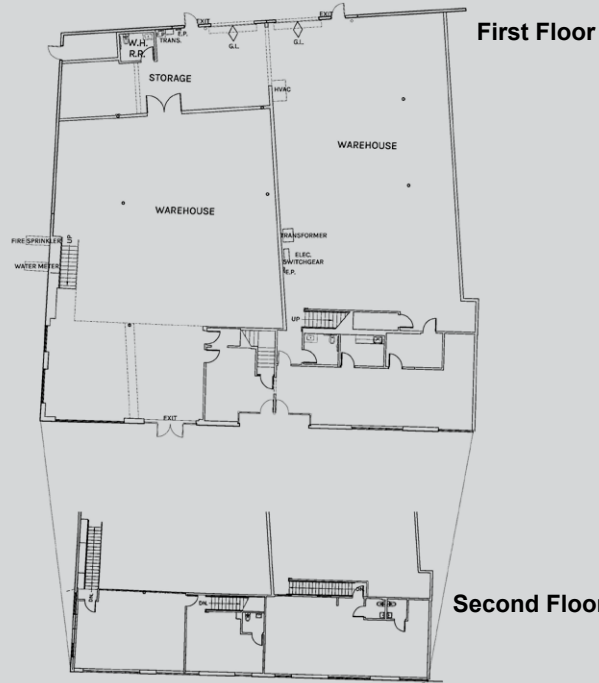


**Rexford
Industrial**

Multi-Tenant Industrial Property

- Total SF: 11,086
- Whse SF: 7,454
- Ground Level Office SF: 1,326
- Mezzanine Level Office SF: 2,306
- Loading: 2 GL
- Lease Rate: \$1.47 PSF MG*

*Plus a \$0.08 per square foot estimated Common Area Maintenance (CAM) fee



For Lease

21 W. EASY STREET, UNIT 101, SIMI VALLEY, CA

11,086 SF

VENTURA COUNTY

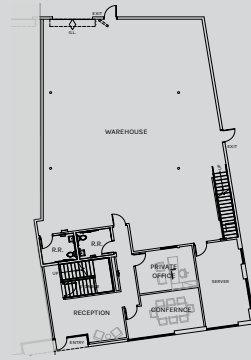


**Rexford
Industrial**

Multi-Tenant Industrial Property

- Total SF: 7,001
- Whse SF: 3,269
- Ground Level Office SF: 947
- Mezzanine Level Office SF: 2,785
- Loading: 1 GL
- Lease Rate: \$1.39 PSF MG*

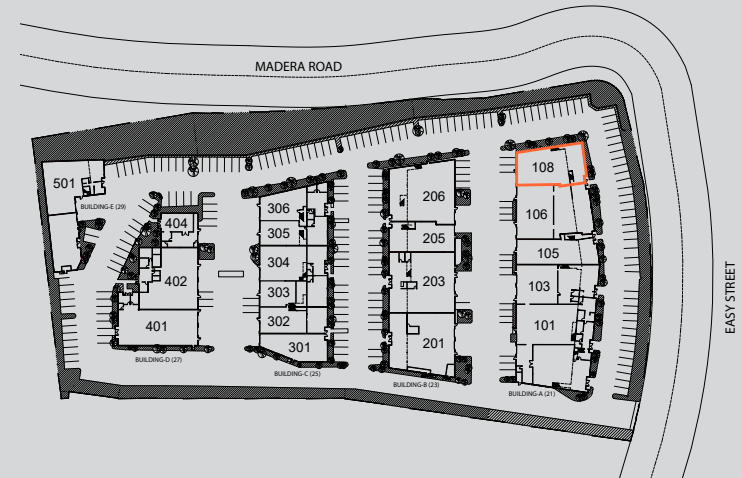
*Plus a \$0.08 per square foot estimated Common Area Maintenance (CAM) fee



First Floor



Second Floor



For Lease

21 W. EASY STREET, UNIT 108, SIMI VALLEY, CA

7,001 SF

VENTURA COUNTY

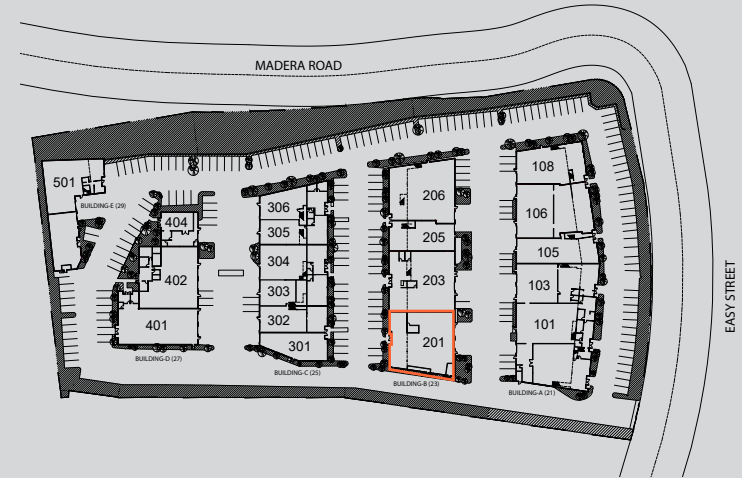
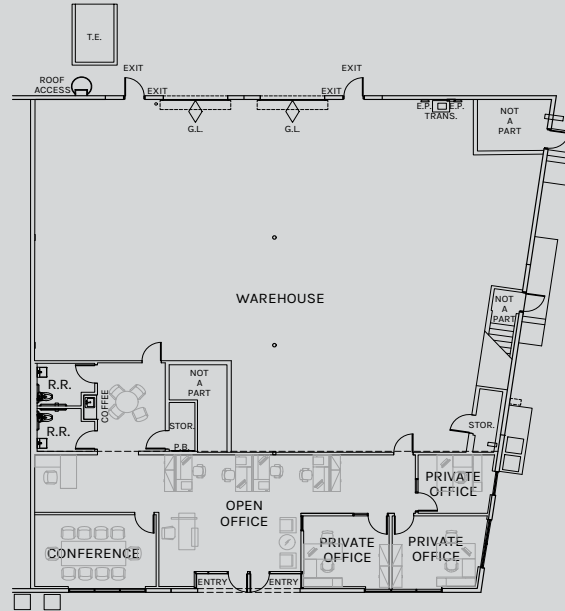


**Rexford
Industrial**

Multi-Tenant Industrial Property

- **Total SF:** 5,962
- **Whse SF:** 4,058
- **Ground Level Office SF:** 1,904
- **Loading:** 2 GL
- **Lease Rate:** \$1.45 PSF MG*

*Plus a \$0.13 per square foot estimated
Common Area Maintenance (CAM) fee



For Lease

23 W. EASY STREET, UNIT 201, SIMI VALLEY, CA

5,962 SF

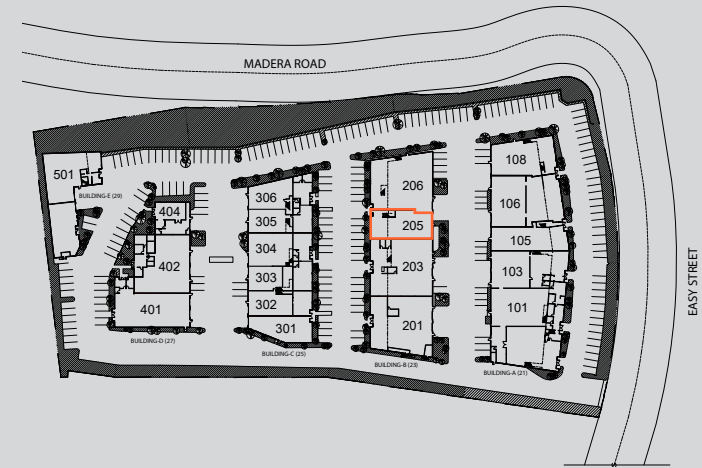
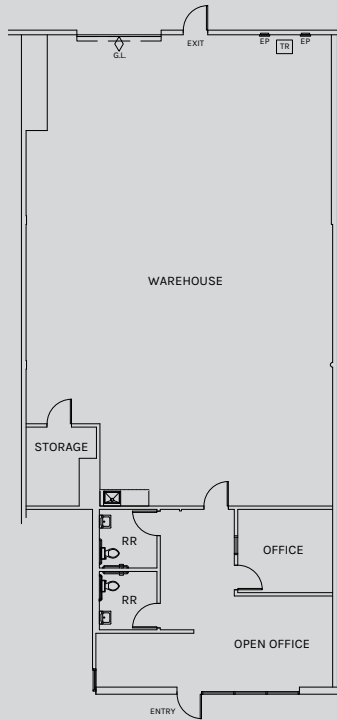
VENTURA COUNTY



Multi-Tenant Industrial Property

- Total SF: 2,955
- Whse SF: 2,280
- Ground Level Office SF: 675
- Loading: 1 GL
- Lease Rate: \$1.45 PSF MG*

*Plus a \$0.13 per square foot estimated
Common Area Maintenance (CAM) fee



For Lease

23 W. EASY STREET, UNIT 205, SIMI VALLEY, CA

2,955 SF

VENTURA COUNTY

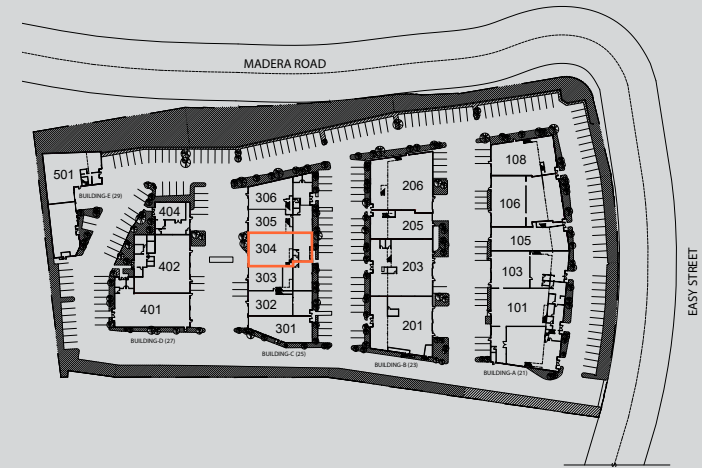
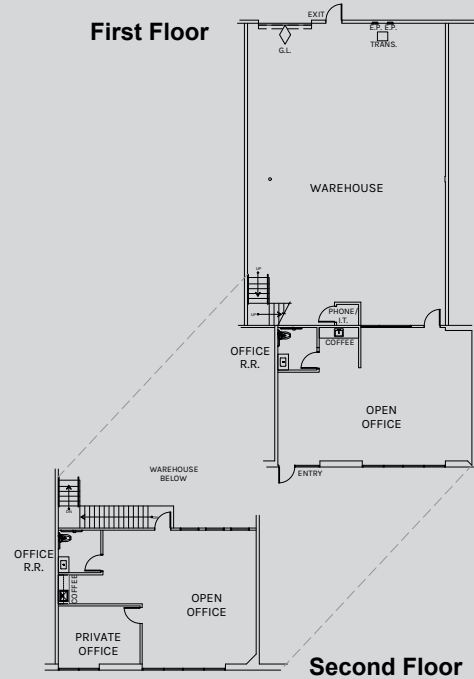


**Rexford
Industrial**

Multi-Tenant Industrial Property

- Total SF: 4,206
- Whse SF: 2,212
- Ground Level Office SF: 982
- Mezzanine Level Office SF: 1,012
- Loading: 1 GL
- Lease Rate: \$1.39 PSF MG*

*Plus a \$0.11 per square foot estimated
Common Area Maintenance (CAM) fee



For Lease

25 W. EASY STREET, UNIT 304, SIMI VALLEY, CA

4,206 SF

VENTURA COUNTY

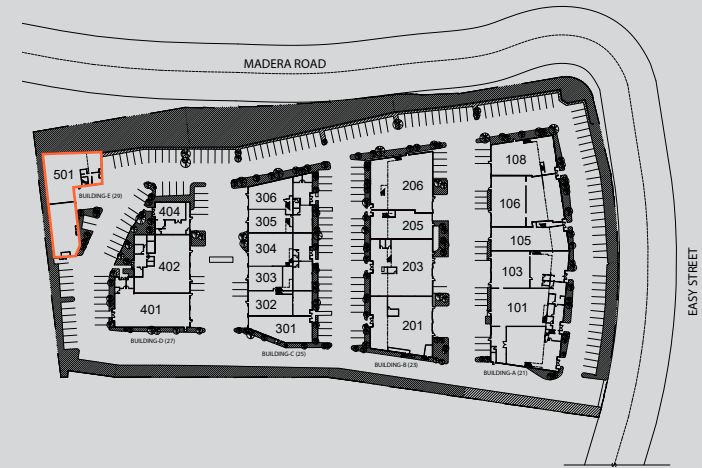
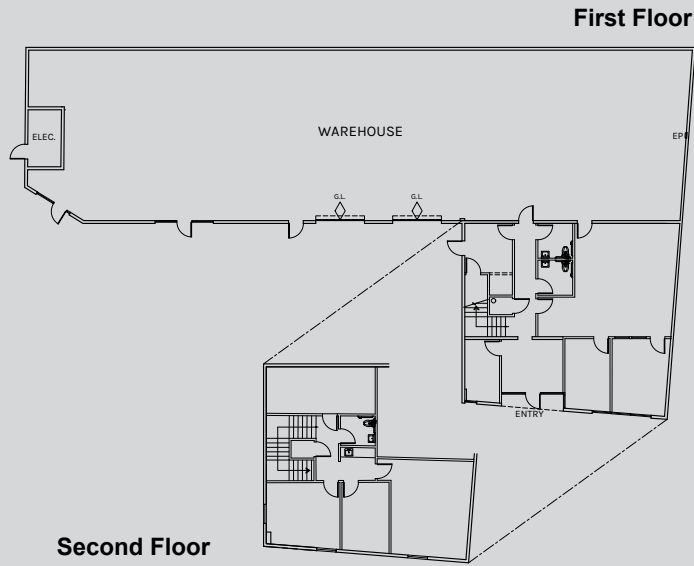


**Rexford
Industrial**

Multi-Tenant Industrial Property

- Total SF: 7,237
- Whse SF: 4,512
- Ground Level Office SF: 1,672
- Mezzanine Level Office SF: 1,053
- Loading: 2 GL
- Lease Rate: \$1.45 PSF MG*

*Plus a \$0.11 per square foot estimated Common Area Maintenance (CAM) fee



For Lease

29 W. EASY STREET, UNIT 501, SIMI VALLEY, CA

7,237 SF

VENTURA COUNTY

