

MOORPARK COMMERCE CENTER
5140-5148 COMMERCE AVE.,
MOORPARK, CA 93021

INDUSTRIAL FOR LEASE



GRANT FULKERSON, SIOR

PRINCIPAL
818.304.4956
GFULKERSON@LEE-RE.COM
WWW.FULKERSON-RE.COM
DRE #01483890

ERICA BALIN

PRINCIPAL/MANAGING DIRECTOR
818.444.4912
EBALIN@LEE-RE.COM
WWW.ERICABALINCRE.COM
DRE #01481476

BRYCE KOLB

ASSOCIATE
818.497.3866
BKOLB@LEE-RE.COM
DRE #02240862

Professionally managed by:

Dolphin Partners, Inc.

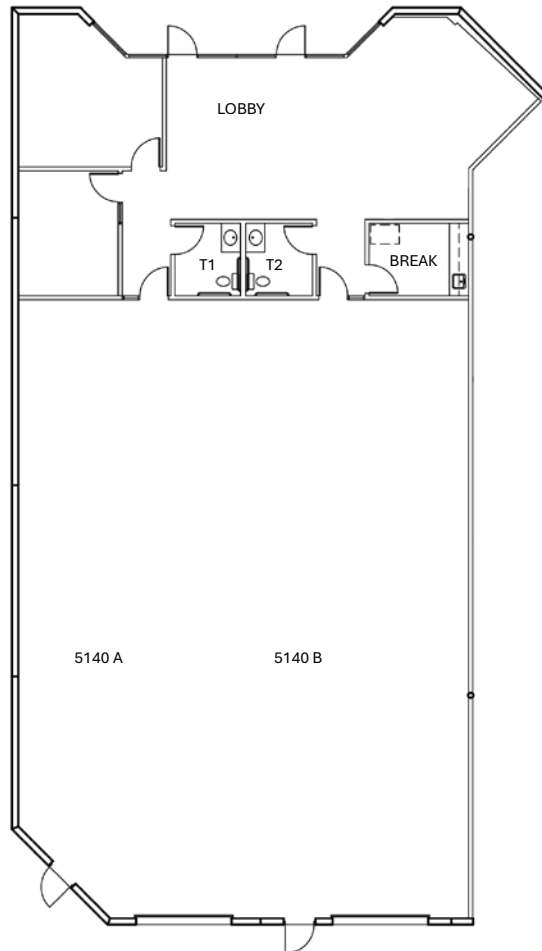
 **LEE &
ASSOCIATES**

COMMERCIAL REAL ESTATE SERVICES

All information furnished regarding the property is from sources deemed reliable, but no warranty or representation is made as to the accuracy thereof. This information is submitted subject to errors, omissions, change of price or terms, prior sale or lease, or withdrawal without notice. No liability of any kind is to be imposed on the broker herein.

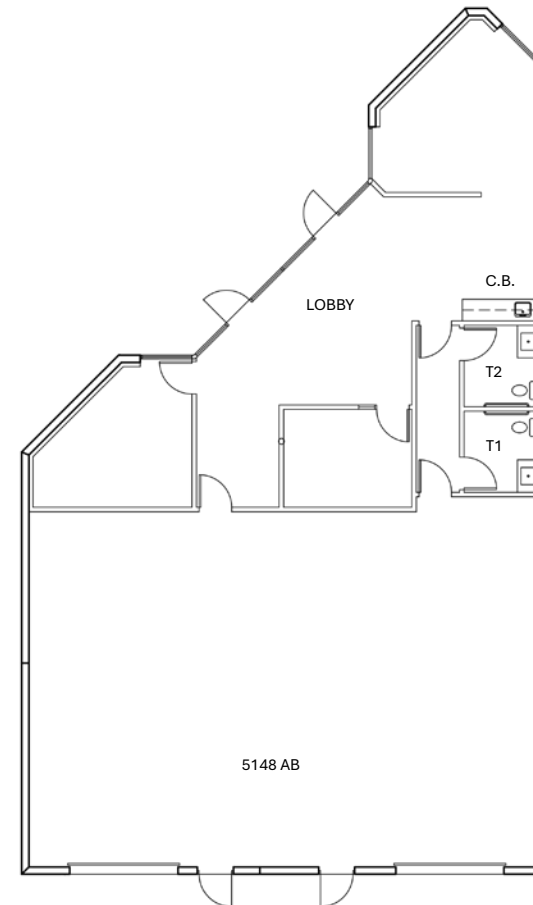
5140 Commerce Ave | Unit A/B

TOTAL SF	4,702 SF
LOADING	2 Ground Level
CLEAR HEIGHT	16 Feet
POWER	400 Amps / 120-208 V
LEASE RATE	\$1.40 PSF MG
CAM	\$0.05 PSF
AVAILABLE	Available Now



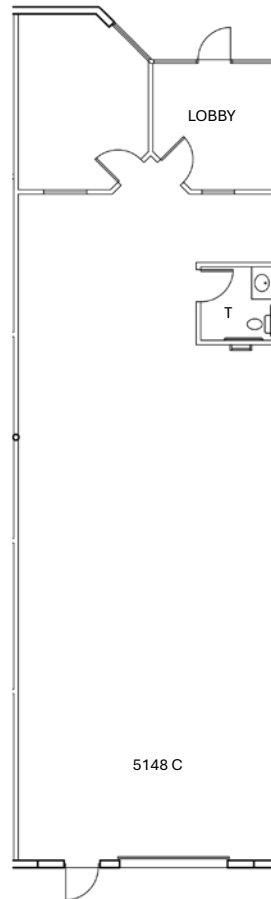
5148 Commerce Ave | Unit A/B

TOTAL SF	3,022 SF
LOADING	2 Ground Level
CLEAR HEIGHT	16 Feet
POWER	400 Amps / 120-208 V
LEASE RATE	\$1.40 PSF MG
CAM	\$0.05 PSF
AVAILABLE	06/01/26



5148 Commerce Ave | Unit C

TOTAL SF	1,934 SF
LOADING	1 Ground Level
CLEAR HEIGHT	16 Feet
POWER	200 Amps / 120-208 V
LEASE RATE	\$1.45 PSF MG
CAM	\$0.05 PSF
AVAILABLE	06/01/26



PROPERTY IMAGES





PROFESSIONAL
BUSINESS PARK
ENVIRONMENT



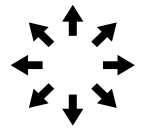
PRISTINE
COMMON
AREAS



IMMEDIATE ACCESS
TO HIGHWAY 118



PROFESSIONALLY
OWNED & MANAGED



OPPORTUNITY
FOR EXPANSION
WITHIN THE PARK



N Commerce Ave

5140

5148

5146

5142

5144

W Los Angeles Ave





MOORPARK COMMERCE CENTER MOORPARK, CA

GRANT FULKERSON, SIOR

PRINCIPAL
818.304.4956
GFULKERSON@LEE-RE.COM
WWW.FULKERSON-RE.COM
DRE #01483890

ERICA BALIN

PRINCIPAL/MANAGING DIRECTOR
818.444.4912
EBALIN@LEE-RE.COM
WWW.ERICABALINCRE.COM
DRE #01481476

BRYCE KOLB

ASSOCIATE
818.497.3866
BKOLB@LEE-RE.COM
DRE #02240862

