

21-29

W. EASY STREET

SIMI VALLEY, CALIFORNIA

VENTURA COUNTY



For Lease

INSTITUTIONALLY MANAGED | FLEXIBILITY TO GROW IN A PORTFOLIO | DELIVERING UNPRECEDENTED CUSTOMER SERVICE

FOR INFORMATION,
CONTACT:



LEE & ASSOCIATES
COMMERCIAL REAL ESTATE SERVICES
Corporate ID #01191898

GRANT FULKERSON, SIOR

Principal
818.304.4956
CA License #01483890

ERICA BALIN

Managing Director
818.444.4912
CA License #01481476

BRYCE KOLB

Associate
818.444.4931
CA License #02240862

Multi-Tenant Industrial Property

- High Image Professional Business Park
- Strategically Located Along Main Thoroughfare
- Gated Site Providing Additional Security
- Immediate Access to Highway 118 Via Madera Rd
- Near Numerous Retail Amenities
- Impressive Clearance Heights
- Zoned GI-SP



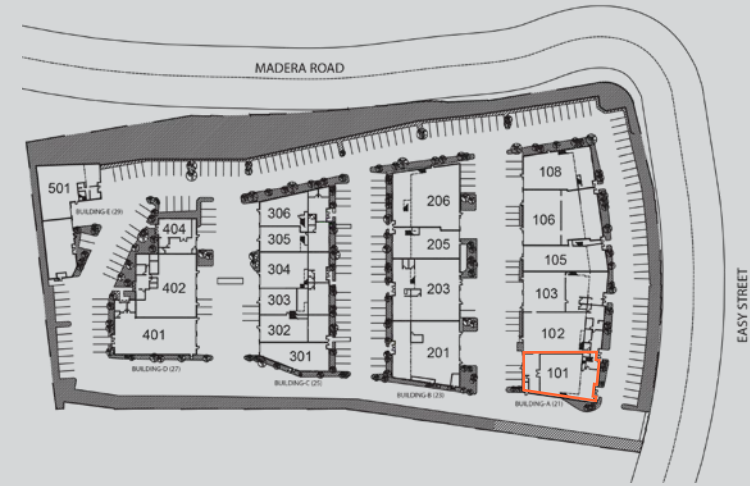
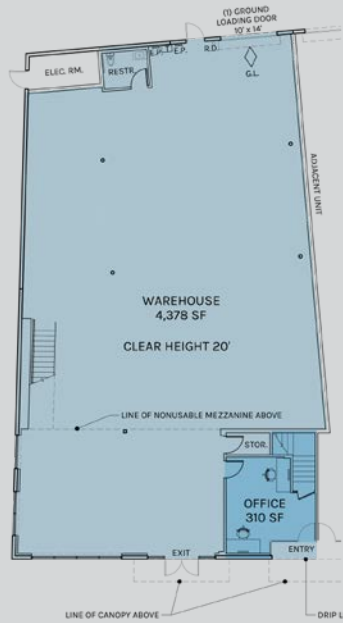
**Rexford
Industrial**

All information furnished regarding the property is from sources deemed reliable, but no warranty or representation is made as to the accuracy thereof. This information is submitted subject to errors, omissions, change of price or terms, prior sale or lease, or withdrawal without notice. No liability of any kind is to be imposed on the broker herein.

Multi-Tenant Industrial Property

- Total SF: 4,688
- Whse SF: 4,378
- Office SF: 310
- Loading: 1 GL
- Lease Rate: \$1.49 PSF MG*

*Plus a \$0.08 per square foot estimated Common Area Maintenance (CAM) fee



For Lease

4,688 SF

21 W. EASY STREET, UNIT 101, SIMI VALLEY, CA

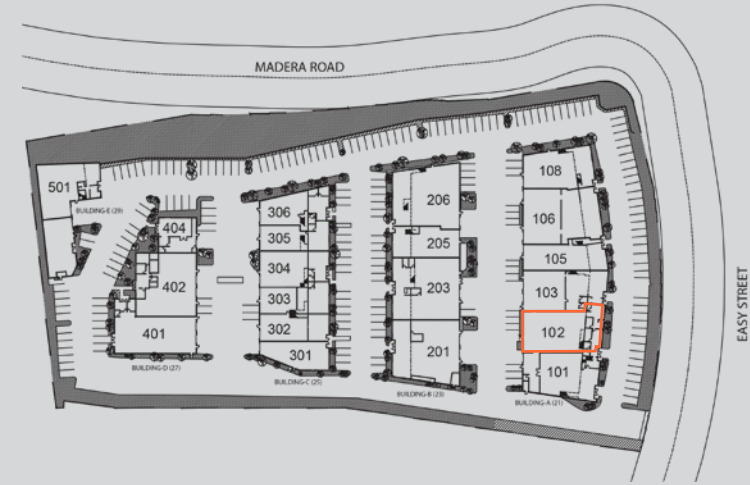
VENTURA COUNTY



Multi-Tenant Industrial Property

- Total SF: 4,105
- Whse SF: 3,124
- Office SF: 981
- Loading: 1 GL
- Lease Rate: \$1.49 PSF MG*

*Plus a \$0.08 per square foot estimated Common Area Maintenance (CAM) fee



For Lease

4,105 SF

21 W. EASY STREET, UNIT 102, SIMI VALLEY, CA

VENTURA COUNTY

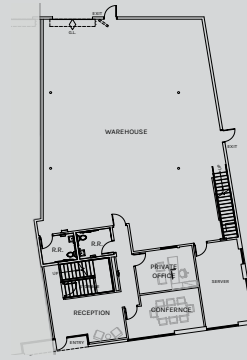


Multi-Tenant Industrial Property

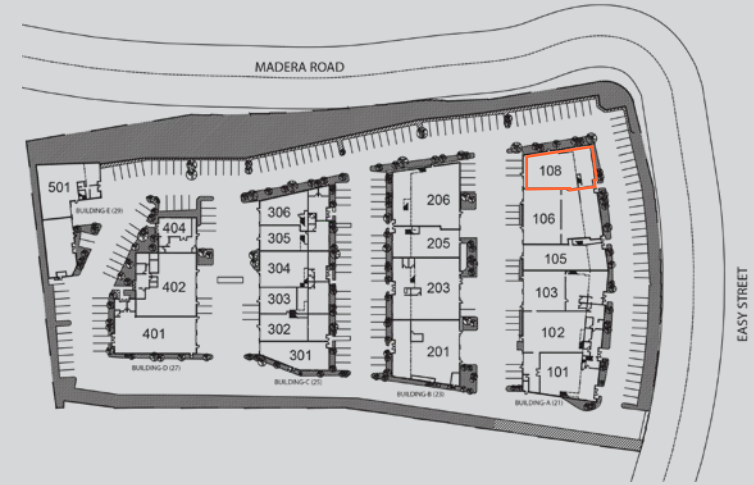
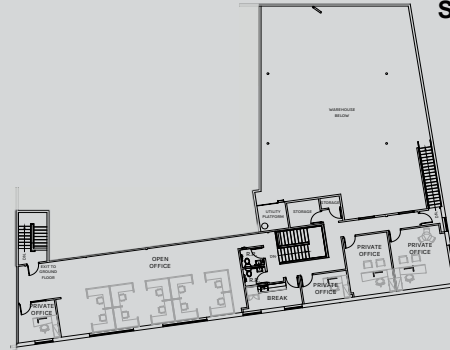
- Total SF: 7,001
- Whse SF: 3,269
- Ground Level Office SF: 947
- Mezzanine Level Office SF: 2,785
- Loading: 1 GL
- Lease Rate: \$1.39 PSF MG*

*Plus a \$0.08 per square foot estimated Common Area Maintenance (CAM) fee

First Floor



Second Floor



For Lease

7,001 SF

21 W. EASY STREET, UNIT 108, SIMI VALLEY, CA

VENTURA COUNTY

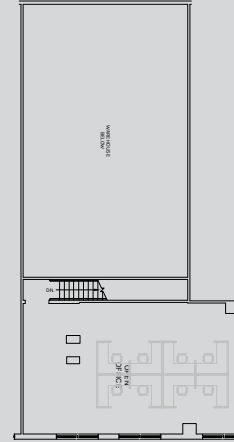
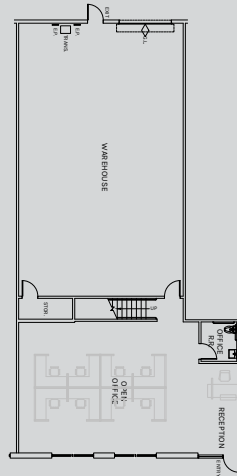


Multi-Tenant Industrial Property

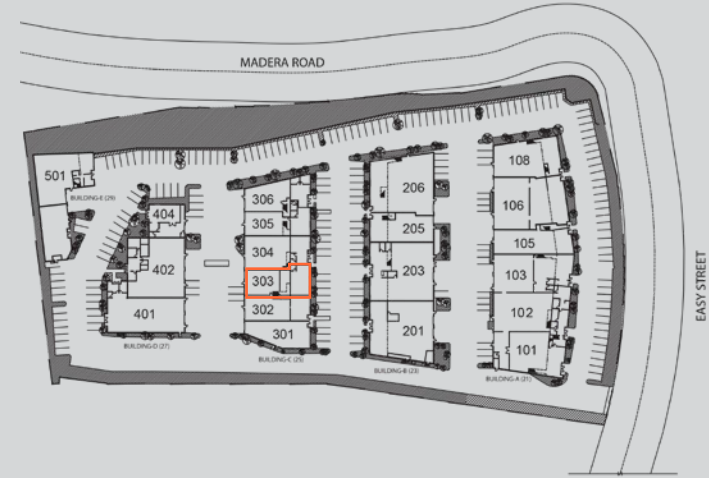
- Total SF: 4,328
- Whse SF: 1,948
- Ground Level Office SF: 1,216
- Mezzanine Level Office SF: 1,164
- Loading: 1 GL
- Lease Rate: \$1.39 PSF MG*

*Plus a \$0.11 per square foot estimated Common Area Maintenance (CAM) fee

First Floor



Second Floor



For Lease

4,328 SF

25 W. EASY STREET, UNIT 303, SIMI VALLEY, CA

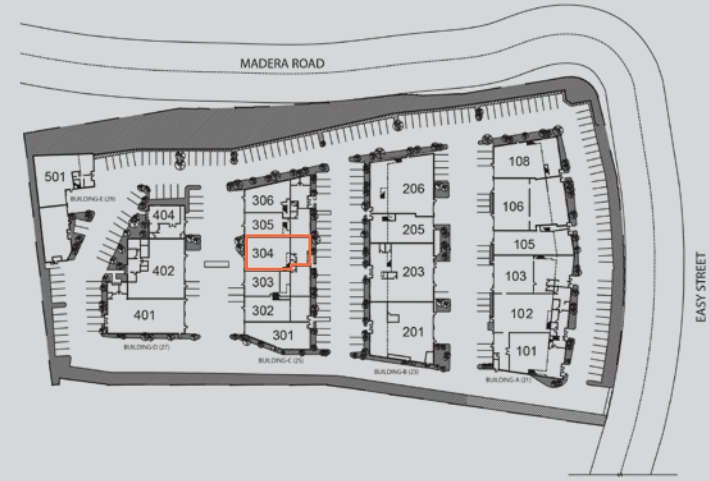
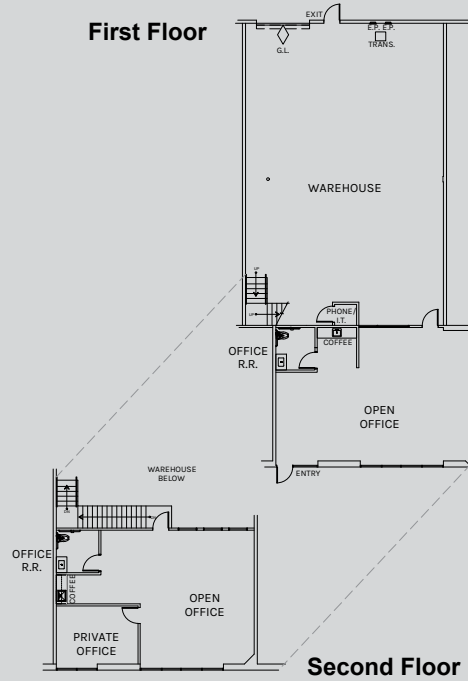
VENTURA COUNTY



Multi-Tenant Industrial Property

- Total SF: 4,206
- Whse SF: 2,212
- Ground Level Office SF: 982
- Mezzanine Level Office SF: 1,012
- Loading: 1 GL
- Lease Rate: \$1.39 PSF MG*

*Plus a \$0.11 per square foot estimated Common Area Maintenance (CAM) fee



For Lease

25 W. EASY STREET, UNIT 304, SIMI VALLEY, CA

4,206 SF

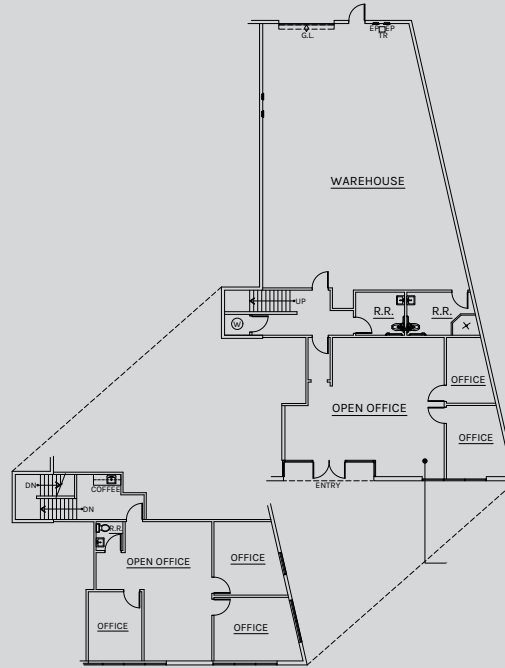
VENTURA COUNTY



Multi-Tenant Industrial Property

- Total SF: 3,988
- Whse SF: 1,579
- Ground Level Office SF: 1,304
- Mezzanine Level Office SF: 1,105
- Loading: 1 GL
- Lease Rate: \$1.39 PSF MG*

*Plus a \$0.11 per square foot estimated Common Area Maintenance (CAM) fee



For Lease

3,988 SF

25 W. EASY STREET, UNIT 306, SIMI VALLEY, CA

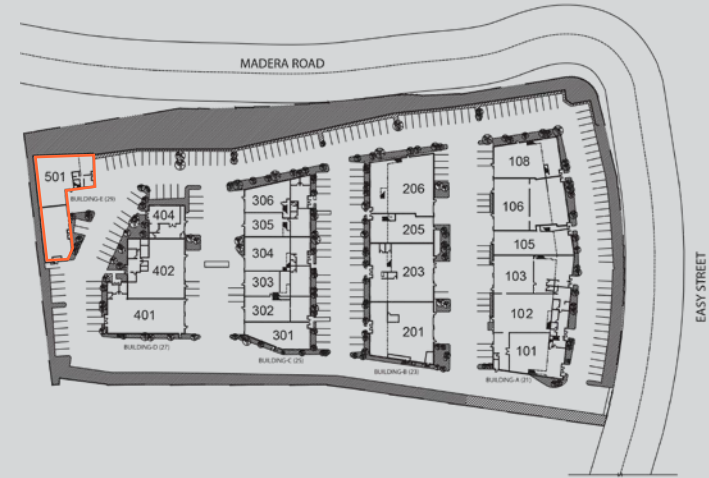
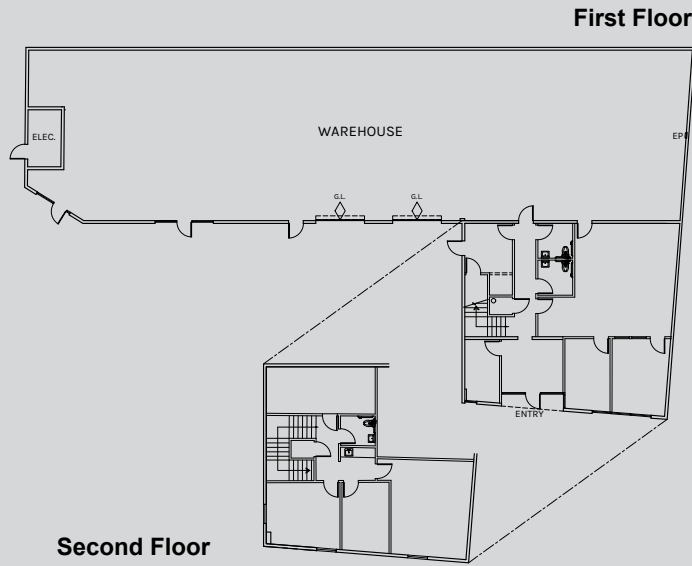
VENTURA COUNTY



Multi-Tenant Industrial Property

- Total SF: 7,237
- Whse SF: 4,512
- Ground Level Office SF: 1,672
- Mezzanine Level Office SF: 1,053
- Loading: 2 GL
- Lease Rate: \$1.45 PSF MG*

*Plus a \$0.11 per square foot estimated Common Area Maintenance (CAM) fee



For Lease

7,237 SF

29 W. EASY STREET, UNIT 501, SIMI VALLEY, CA

VENTURA COUNTY

